

Case Study



TRAFFILOG HELPS ARRIVA TO LOWER FUEL CONSUMPTION AND DECREASE IDLE-TIME

Business Challenge:

To prove cut fuel costs of route busses, reduce idle-time, and promote Arriva as a 'Green Fleet' by decreasing CO2 emission.

Arriva is one of the largest transport services organizations in Europe, employing more than 44,000 people and delivering more than one billion passenger journeys across 12 European countries every year. Arriva is provider of bus, train, commuter coach, waterbus and airport related transport services, and bus and coach distribution.

Over a 6 months pilot period, Traffilog worked with Arriva to install Traffilog units in 40 busses and collect data to develop a baseline of driver DNA. The main target of the pilot was to prove cut fuel costs of route busses, decrease busses idle-time, and to promote Arriva as a 'Green Fleet' by decreasing CO2 emission.

Pilot's results:

- Lowering fuel consumption by **11%**
- Decreasing idle-time by **75%**

Following pilot:

Order of Traffilog solution for 2400 busses (full Danish and Swedish fleet)

For more information:

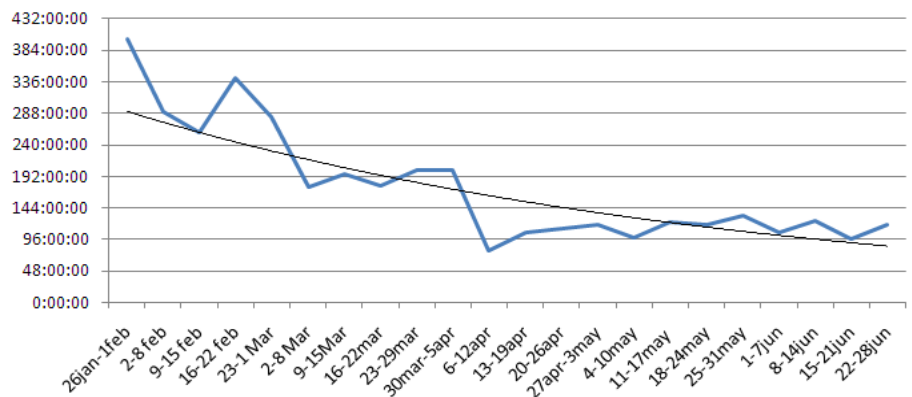
Contact us at:

info@traffilog.com

Or visit us at:

www.traffilog.com

Idle Time



Liter per 100 KM

